

ISSUE 1 DESIGN



This is the first of Steel for Life's regular e-newsletters specifically tailored to architects and designers. Steel for Life is a subsidiary of the British Constructional Steelwork Association (BCSA). Our mission is to support design and construction professionals by providing knowledge, support and tools for designing in steel.

The aim of this newsletter is to showcase the very best of our online content, tools and resources available to design and construction professionals in a way that is engaging, relevant and, above all, useful. The theme of this first newsletter is Steel and the Circular Economy. We also signpost to some interesting case studies and to some useful steel-related resources.

STEEL AND THE CIRCULAR ECONOMY

The concept of a Circular Economy holds-out the prospect of a future with significantly reduced waste and energy consumption, with all the benefits that would bring. For designers, and clients keen to realise those benefits, steel is the obvious choice. Specifying steel avoids the fate of down-cycling suffered by other structural materials.

Steel is recyclable without any loss of its mechanical properties. In the UK, currently 95% of all structural steel sections are recycled, with the remaining 5% being reused. Design for reuse is becoming

more prevalent, and the reuse of single-storey agricultural and some industrial steel-framed buildings is growing. The challenge to designers and the steel supply chain, however, is to put systems in place to enable more widespread reuse of steel sections following demolition.

The Steel Construction Institute (SCI) and the University of Cambridge have completed two major research projects exploring the increased reuse of steel, and further European research projects are under way. To find out more about Steel and the Circular Economy click on the links below.

[CLICK HERE TO READ MORE ABOUT STEEL'S ROLE IN THE CIRCULAR ECONOMY](#)

[CLICK HERE TO READ MORE ON RECYCLING AND REUSE OF STEEL](#)

PROJECT FOCUS

Below and on the following page are a selection of recent case studies from our publication New Steel Construction Magazine.

INTERNATIONAL AVIATION ACADEMY, NORWICH

Read the [full case study](#) of the International Aviation Academy in Norwich where an aircraft hangar is being converted into an education and training centre for the aviation industry.



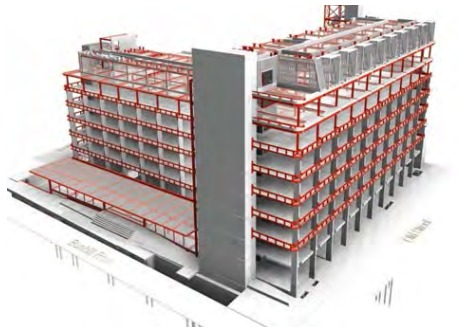
COAL DROPS YARD, LONDON

Read the [full case study](#) of Coal Drops Yard at King's Cross where a highly bespoke steel-framed roof structure will provide two restored buildings with a new crowning glory.



160 OLD STREET, LONDON

Read the [full case study](#) of the 160 Old Street project where new steelwork additions are helping to convert a 1970s-built office building into a modern commercial scheme fit for the 21st century.



USEFUL LINKS

Steel for Life provides free access to a wealth of online resources related to steel construction, through our online encyclopedia www.SteelConstruction.info. Click on the links below to access more content.

STRUCTURAL STEEL DESIGN AWARDS SHORTLIST (SSDA)

View details of the 17 projects shortlisted for the 49th Structural Steel Design Awards on SteelConstruction.info.

COSTING STEELWORK

This article focuses on the offices sector and provides a building type specific cost comparison and includes a cost table with indicative cost ranges for various frame types.

SUSTAINABLE STEEL BUILDINGS CPD

This CPD article examines a number of steel's sustainability credentials providing a useful introduction or reminder for design and construction professionals.

STEEL FABRICATION

This article provides a useful introduction to constructional steelwork fabrication.

YOUR STEEL RESOURCES

SteelConstruction.info

A free on-line encyclopedia containing useful resources and content on UK steel construction including; sector articles, case studies by sector, software, tools, CPD and training.



New Steel Construction Magazine

Published ten times a year, New Steel Construction provides a lively and up-to-date window into the steelwork construction industry. Visit for projects and features, steel construction news, BCSA member listings and to register for your free subscription.



SteelConstruction.org

The website for the British Constructional Steelwork Association. Including searchable BCSA Member directories and structural steel technical publications.



CONTACT DETAILS

For further information on Steel Construction please visit:
www.steelconstruction.info

For Steel for Life and our sponsors:
www.steelforlife.org/about-steel-for-life

Our E-mailing address is:
steelforlife@steelconstruction.org

**Steel for Life, 4 Whitehall Court,
Westminster, London, SW1A 2ES**



[CLICK HERE TO SUBSCRIBE TO OUR MAILING LIST](#)